

TX-5266W300FC120-NUFENG-B01CH95

PRODUCT SPECIFICATION

Features:

- ◆ Excellent transiting heat from LED chip operating under 10.0A.
- ◆ High luminous output.
- ◆ No UV.
- ◆ Encapsulated materials are environmentally certified and meet environmental requirements.

Chip Material:

- ◆ GaN

Emitting Color:

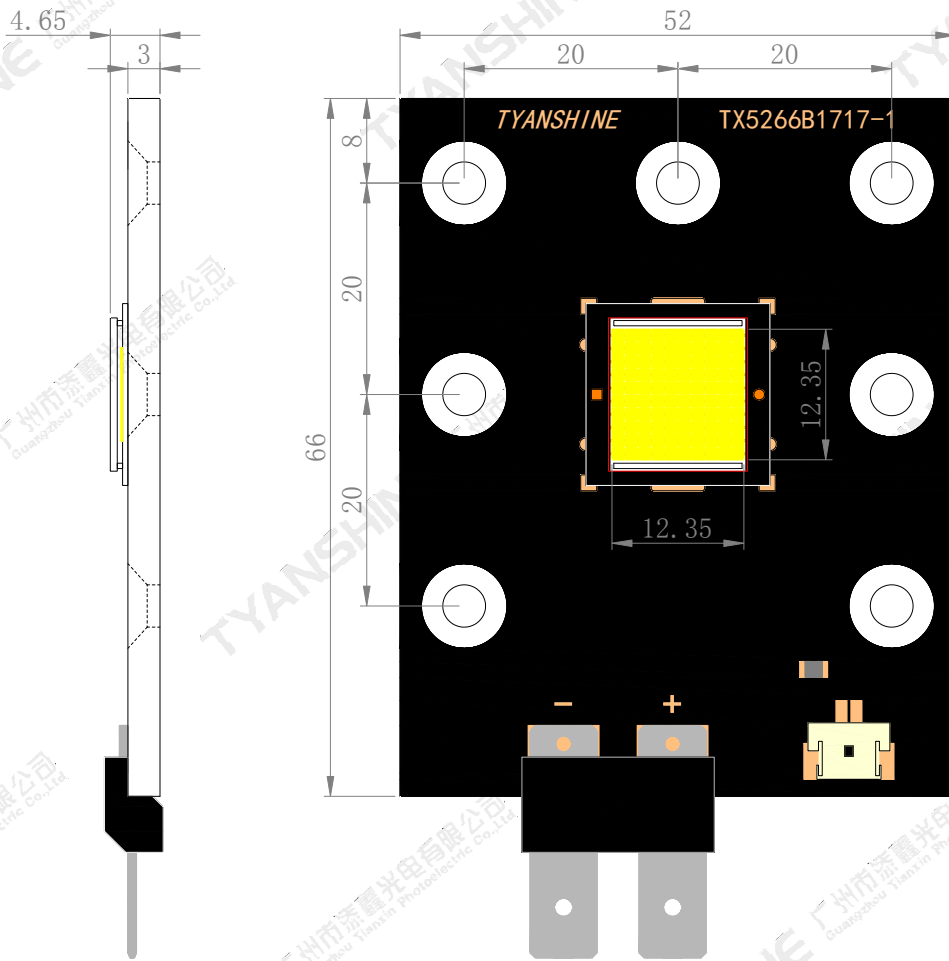
- ◆ White (W)

Applications:

- ◆ Auxiliary lighting
- ◆ Architectural lighting

Part No.	TX-5266W300FC120-NUFENG-B01CH95	Spec No.	WKF-FA0053	Page	1 of 8
----------	---------------------------------	----------	------------	------	--------

Package Dimensions:



Notes:

- 1.All dimensions are in millimeters .
- 2.Tolerances unless otherwise mentioned are $\pm 0.1\text{mm}$.

Absolute Maximum Ratings (Tc=25°C)

Parameter	Symbol	Ratings	Unit
Forward Current	IF	11	A
Reverse Voltage	VR	Not designed for reverse operation	V
Power Dissipation	PD	380	W
Junction Temperature	Tj	150	°C
Electrostatic Discharge Threshold (ESD)	ESD	2000	V
Storage Temperature	Tstg	-20~+70	°C
Operation Temperature	Topr	-30~+85	

Notes:

- Specifications are subject to change without notice.
- The data on this specification is for reference only and the actual data is in accordance with the acknowledgment.
- Precautions for ESD:
 STATIC SHIELD Electricity and surge damages the LED. It is recommended to use a wrist band or anti-electrostatic glove when handling the LED. All devices, equipment and machinery must be properly grounded.

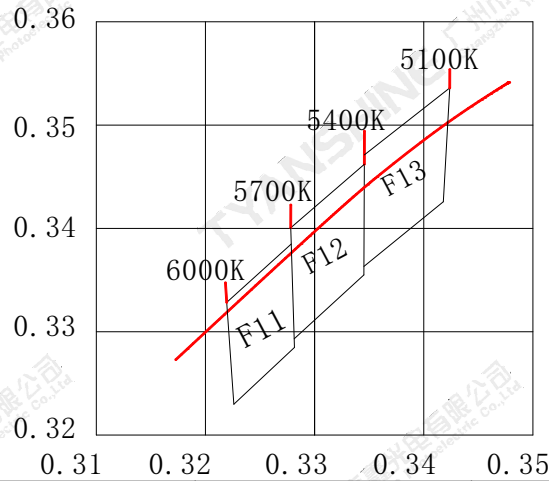
Electrical Optical Characteristics Tc=25°C, IF=10.0A

Parameter	Symbol	Min.	Typ.	Max.	Units
Luminous Flux	ϕ_v	18710	—	21520	lm
Correlated Colour Temperature	CCT	5100	—	6000	K
Forward Voltage	V_f	30	32	34	V
Viewing Angle at 50% IV	$2\theta_{1/2}$	—	120	—	Deg
Spectral Line Half-Width	$\Delta\lambda$	220	225	230	nm
Reverse Current	I_R	—	—	—	μA
Color Rendering Index	Ra	—	95	97	—
Thermal Resistance Junction to Case	$R\theta_{J-C}$	—	0.1	—	K/W
Temperature Coefficient of Voltage	$V\Delta F/T$	—	-16.7	—	mV/°C
Thermistor(NTC)	Rt25	—	10	—	K Ω

Notes:

- 1.Luminous intensity is measured with a light sensor and filter combination that approximates the CIE eye-response curve.
2. $\theta_{1/2}$ is the off-axis angle at which the luminous intensity is half the axial luminous intensity.
- 3.Luminous flux measurement tolerance:±15%.
- 4.Forward voltage measurement tolerance:±0.15V.

White light Color coordinate filing Tc=25°C, IF=10.0A

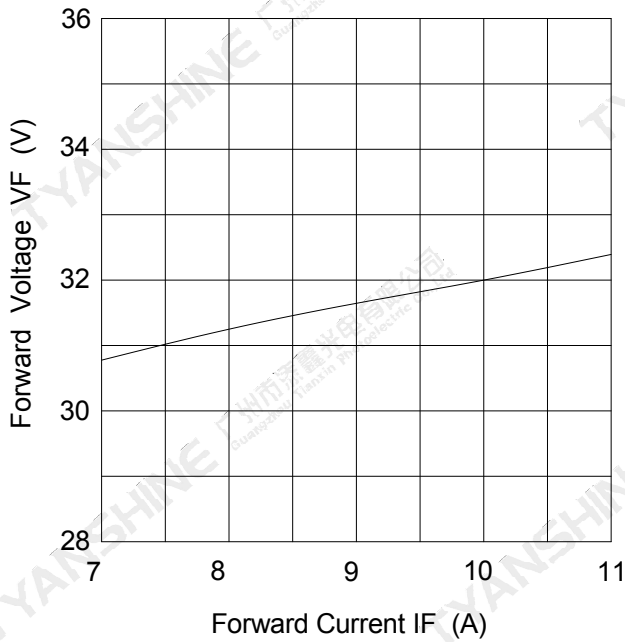


Grade	TC	P1		P2		P3		P4	
		X1	Y1	X2	Y2	X3	Y3	X4	Y4
F13	5100-5400K	0.3418	0.3426	0.3424	0.3536	0.3346	0.3471	0.3345	0.3363
F12	5400-5700K	0.3345	0.3355	0.3346	0.3462	0.3278	0.3401	0.3281	0.3293
F11	5700-6000K	0.3282	0.3285	0.3279	0.3385	0.3219	0.3328	0.3226	0.323

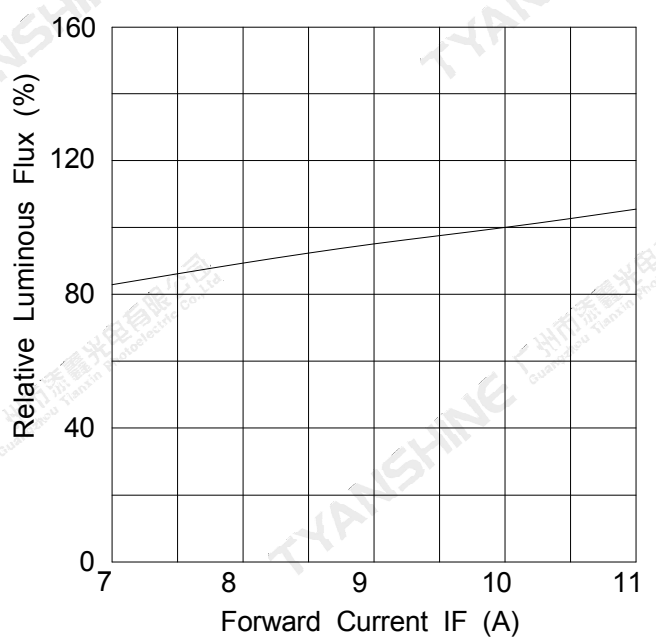
Typical Electrical/Optical Characteristics Curves

(25°C Ambient Temperature Unless Otherwise Noted)

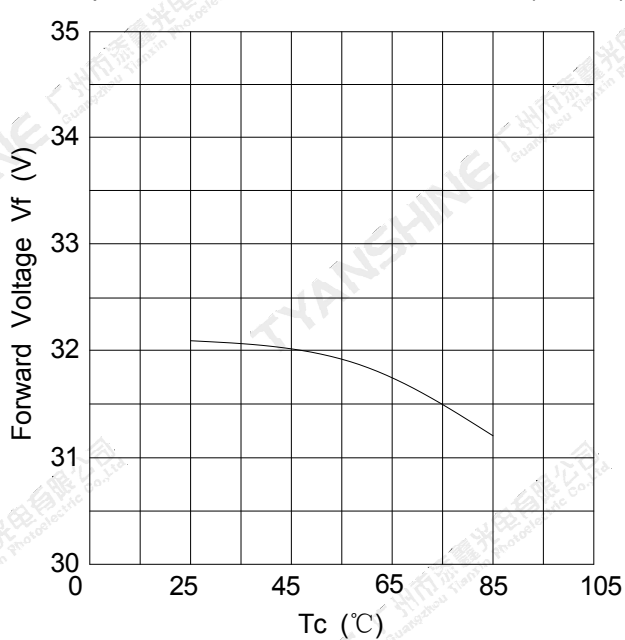
Forward Current VS. Relative Forward Voltage



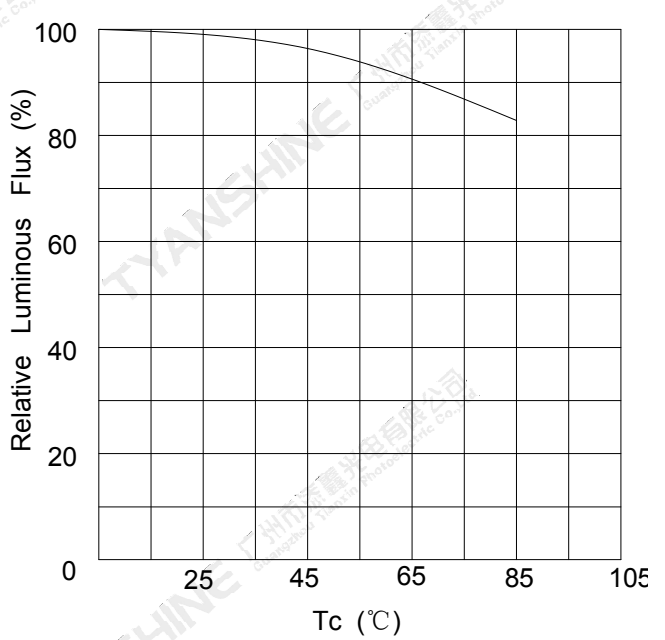
Forward Current VS. Relative Luminous Flux

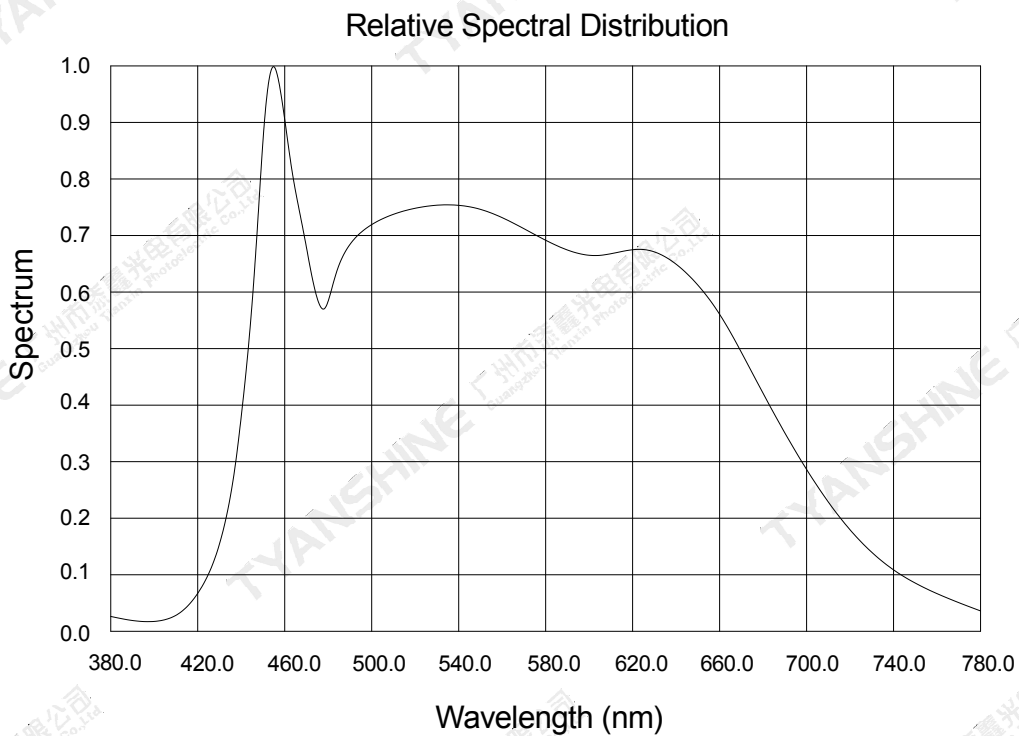
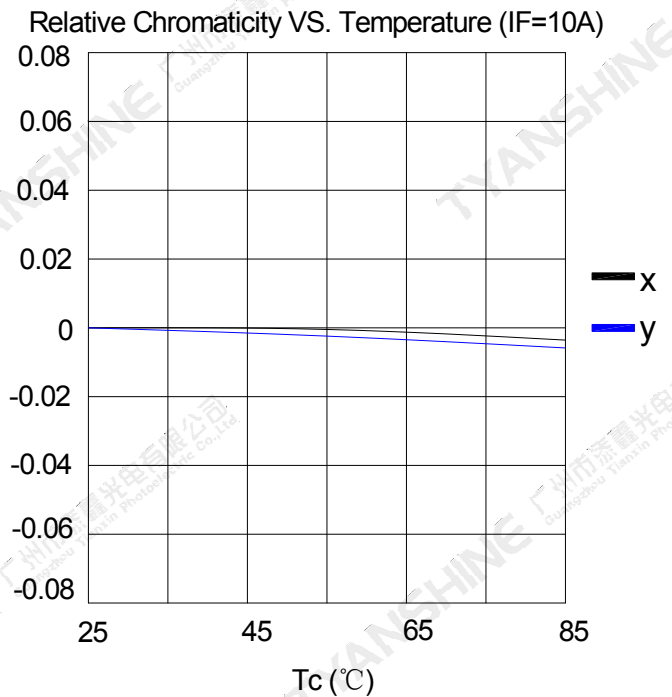
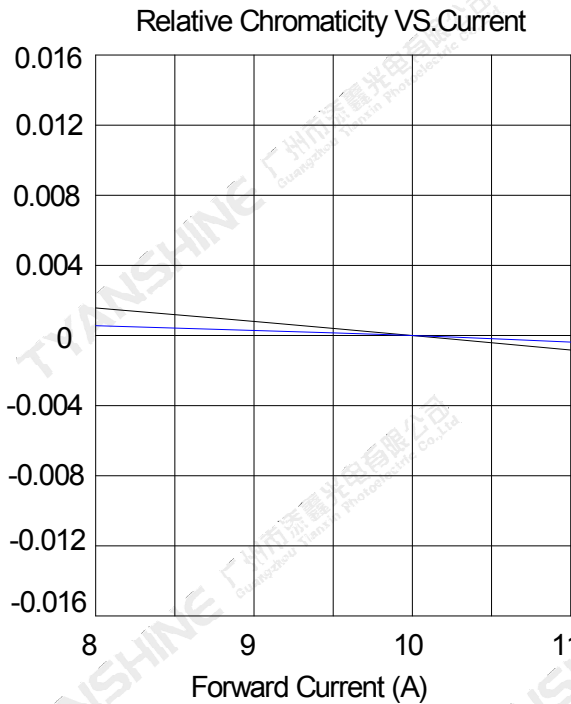


Temperature VS. Relative Luminous FLux (IF=10A)



Temperature VS. Forward Voltage (IF=10A)



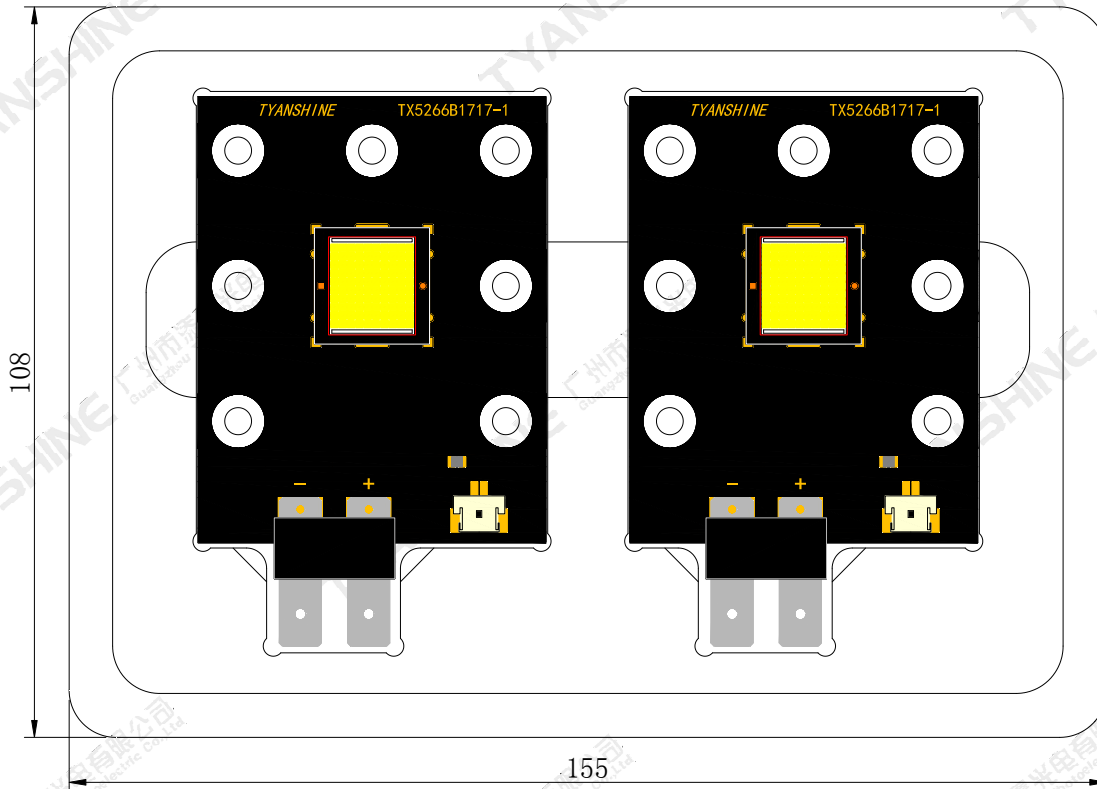


Notes:

1. $2\theta_{1/2}$ is the off axis angle from lamp centerline where the luminous intensity is 1/2 of the peak value.
2. View angle tolerance is $\pm 5^\circ$.

Dimensions For Cannulation And Packaging

Quantity:2 PCS



Notes:

1. All dimensions are in millimeters.
2. Tolerances are ± 2.0 mm unless otherwise noted.
3. The products are packaged together with silica gel, Transport, not to the weight of welding LED light-emitting area, As a result of the weight of LED light-emitting zone in the quality of, Irresponsible of the Company.

Part No.	TX-5266W300FC120-NUFENG-B01CH95	Spec No.	WKF-FA0053	Page	8 of 8
----------	---------------------------------	----------	------------	------	--------