

# TX-2828W350C25F18-10H95

## PRODUCT SPECIFICATION (R&D version)

**Features:**

- ◆Excellent transiting heat from LED chip operating under 3.25A\*2 (I+II) .
- ◆Provide uniform cross distribution of positive white and warm white dual color scheme, mixed pure.
- ◆High luminous output.
- ◆No UV.
- ◆Encapsulated materials are environmentally certified and meet environmental requirements.

**Chip Material:**

- ◆GaInN

**Emitting Color:**

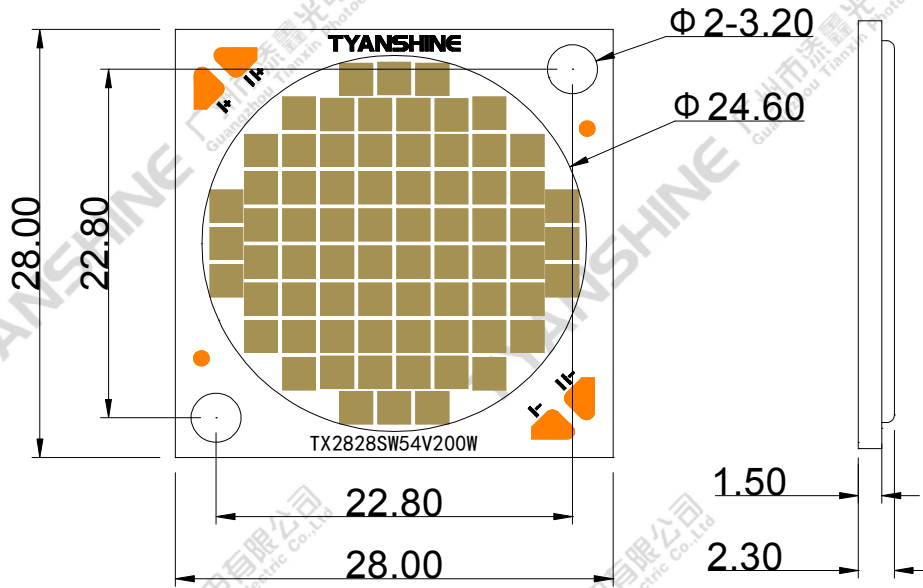
- ◆White
- ◆Warm white

**Applications:**

- ◆Commercial lighting
- ◆General Lighting

Part No.	TX-2828W350C25F18-10H95	Spec No.	WKF-DD0010	Page	1 of 9
----------	-------------------------	----------	------------	------	--------

Package Dimensions:



I: White (W) ; II: White (W)

Notes:

- 1.All dimensions are in millimeters .
- 2.Tolerances unless otherwise mentioned are  $\pm 0.25\text{mm}$  .

Code Formats:

TX-2828W350C25F18-10H95

TX	—	2828	W	350	C	25	F	18	—	10	H95
TYANSHINE	—	series	performance	watt typ	texture	LES	Chip code	Die count in series	—	BOM	Ra

Part No.	TX-2828W350C25F18-10H95	Spec No.	WKF-DD0010	Page	2 of 9
----------	-------------------------	----------	------------	------	--------

**Absolute Maximum Ratings**

Parameter	Symbol		Ratings	Unit
Forward Current	IF (I+II)		3.25A*2	A
Reverse Voltage	VR		Not designed for reverse operation	V
Power Dissipation	PD	W (I+II)	350	W
Junction Temperature	Tj	W	150	°C
Case Temperature (C)	Tc		105	°C
Electrostatic Discharge Threshold (ESD)	ESD		2000	V
Storage Temperature	T <sub>stg</sub>		-40~+100	°C
Operation Temperature	T <sub>opr</sub>		-40~+105	

**Notes:**

- Specifications are subject to change without notice.
- The data on this specification is for reference only and the actual data is in accordance with the acknowledgment.
- Precautions for ESD:  
STATIC SHIELD Electricity and surge damages the LED. It is recommended to use a wrist band or anti-electrostatic glove when handling the LED. All devices, equipment and machinery must be properly grounded.

Part No.	TX-2828W350C25F18-10H95	Spec No.	WKF-DD0010	Page	3 of 9
----------	-------------------------	----------	------------	------	--------

**Electrical Optical Characteristics (Tc=25°C)**

Parameter	Symbol	Condition	Emitting color	Min.	Typ.	Max.	Units
Luminous Flux	$\phi_v$	$I_f=1.5A*2$ (I+II)	W	15000	17000	—	lm
Forward Voltage	$V_f$		W	48	51	54	V
Correlated Colour Temperature	CCT		W	5000	—	5500	K
Luminous Flux	$\phi_v$	$I_f=3.25A*2$ (I+II)	W	28000	32000	—	lm
Forward Voltage	$V_f$		W	51	54	57	V
Correlated Colour Temperature	CCT		W	5300	—	5800	K
Viewing Angle at 50% IV	$2\theta_{1/2}$		W	—	115	—	Deg
Thermal Resistance Junction to Case	$R\theta_{J-C}$		W	—	0.2	—	K/W
Color Rendering Index	$R_a$		W	95	—	—	—
	$R_9$		W	90	—	—	—
TLCI	—		W	95	—	—	—
TM-30	RF		W	90	—	—	—
	RG	W	98	—	103	—	

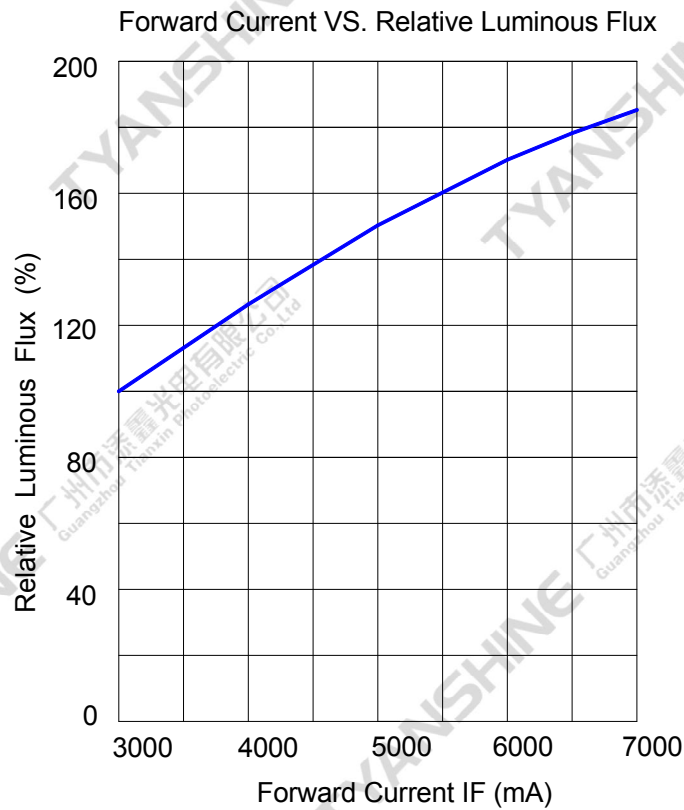
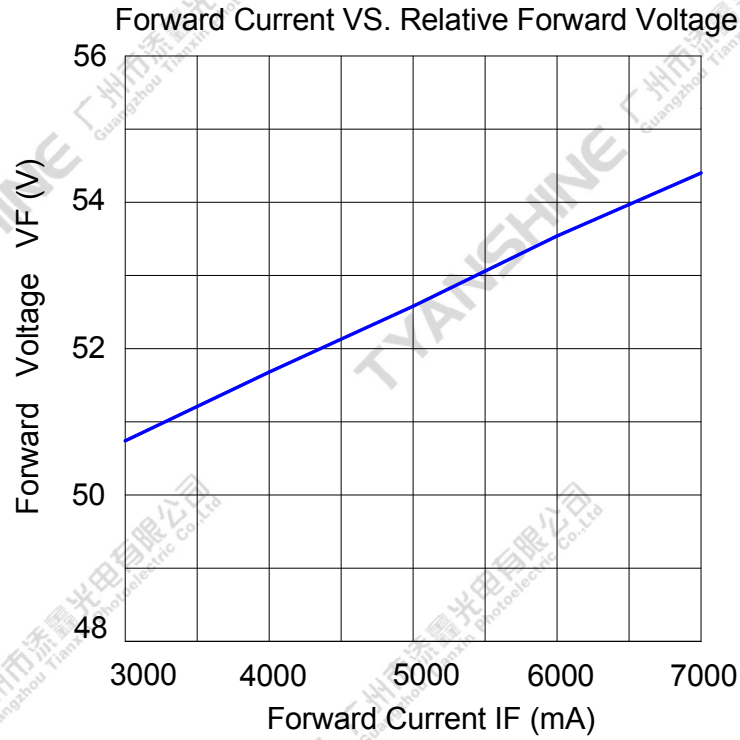
**Notes:**

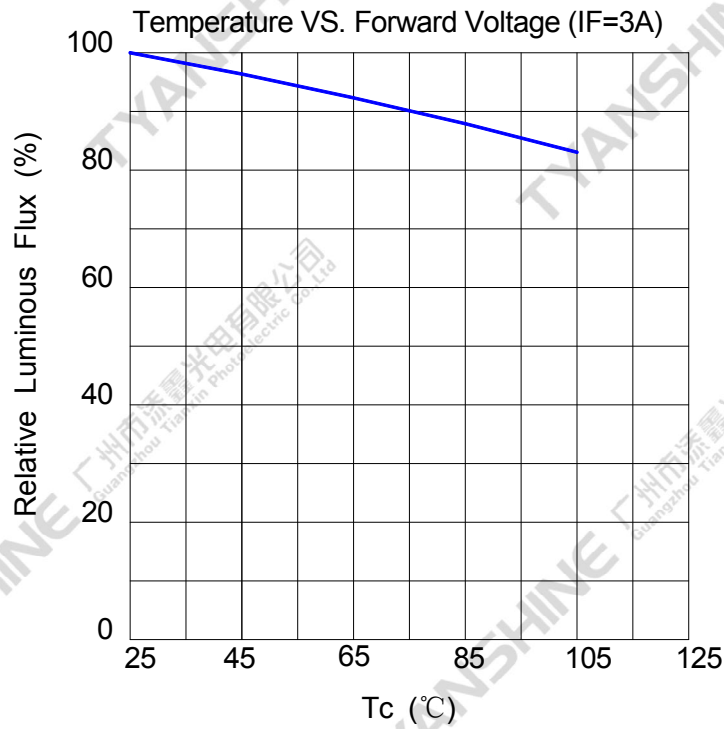
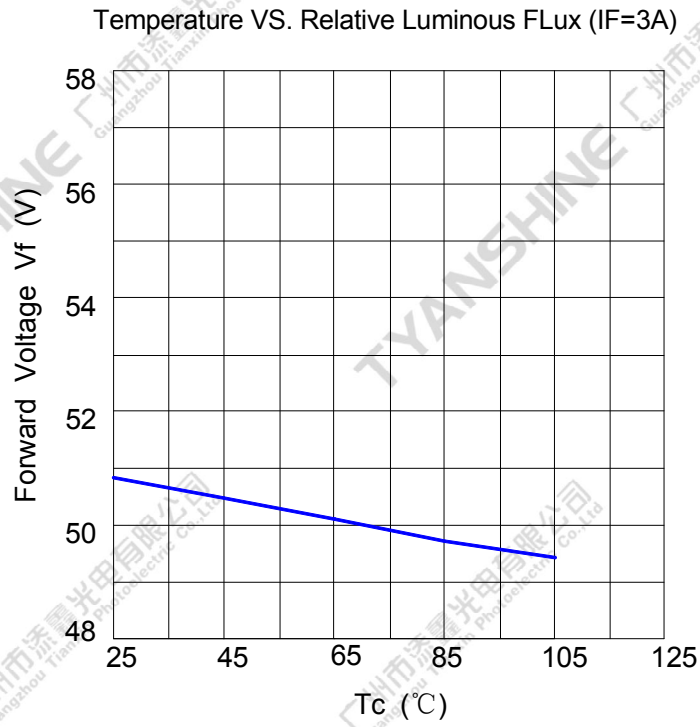
- 1.Luminous intensity is measured with a light sensor and filter combination that approximates the CIE eye-response curve.
2. $\theta_{1/2}$  is the off-axis angle at which the luminous intensity is half the axial luminous intensity.
- 3.Luminous flux measurement tolerance:±10%.
- 4.Forward voltage measurement tolerance:±3%.
5. $R_a$  measurement tolerance: ±2.
- 6.chromaticity (x, y) measurements tolerance: ±0.005.

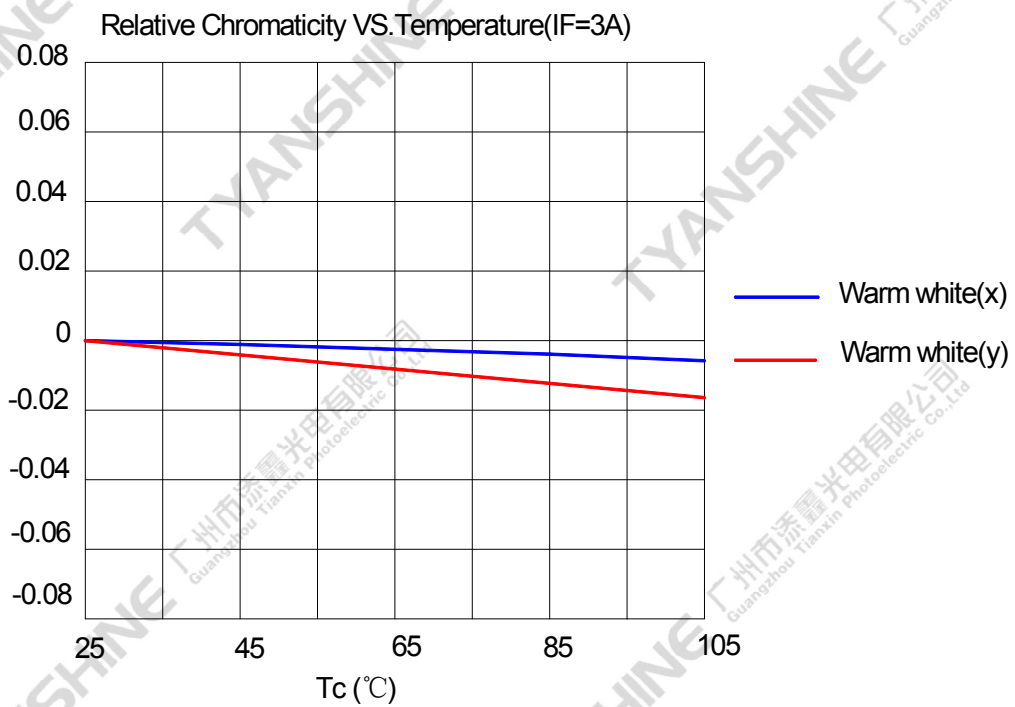
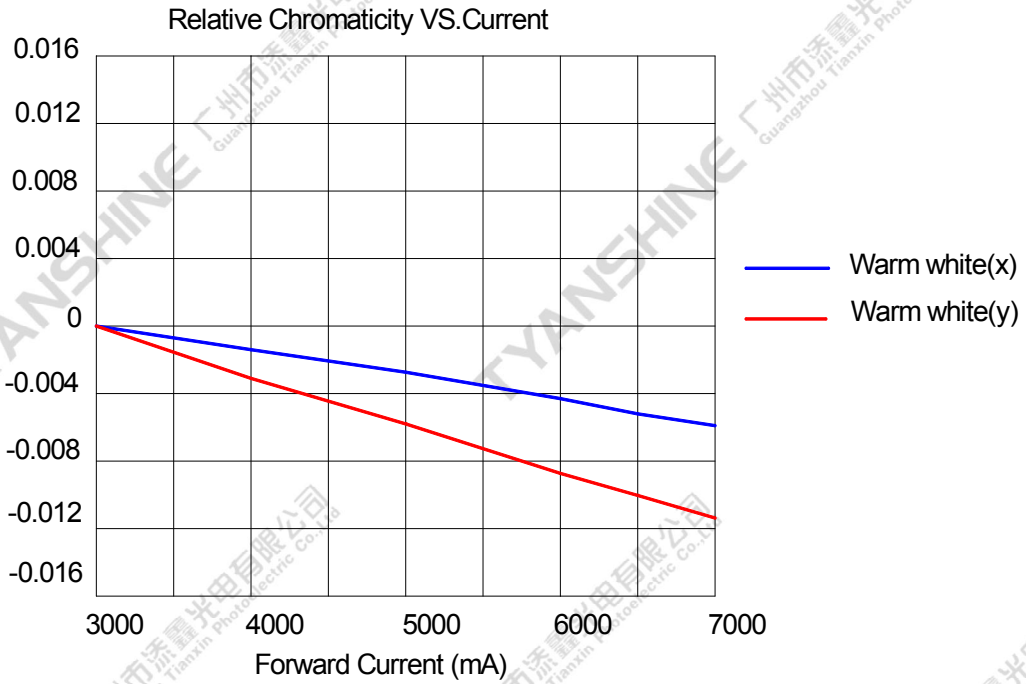
Part No.	TX-2828W350C25F18-10H95	Spec No.	WKF-DD0010	Page	4 of 9
----------	-------------------------	----------	------------	------	--------

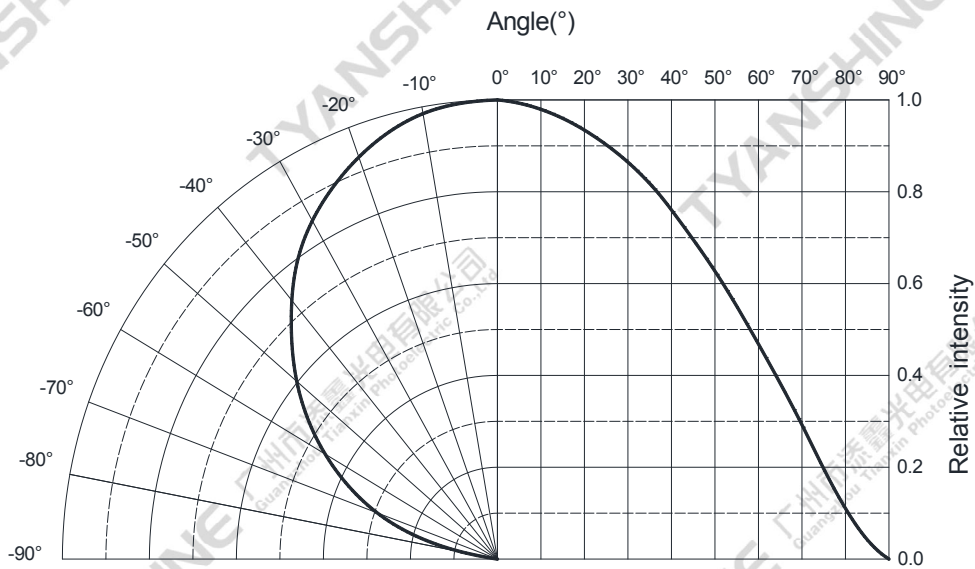
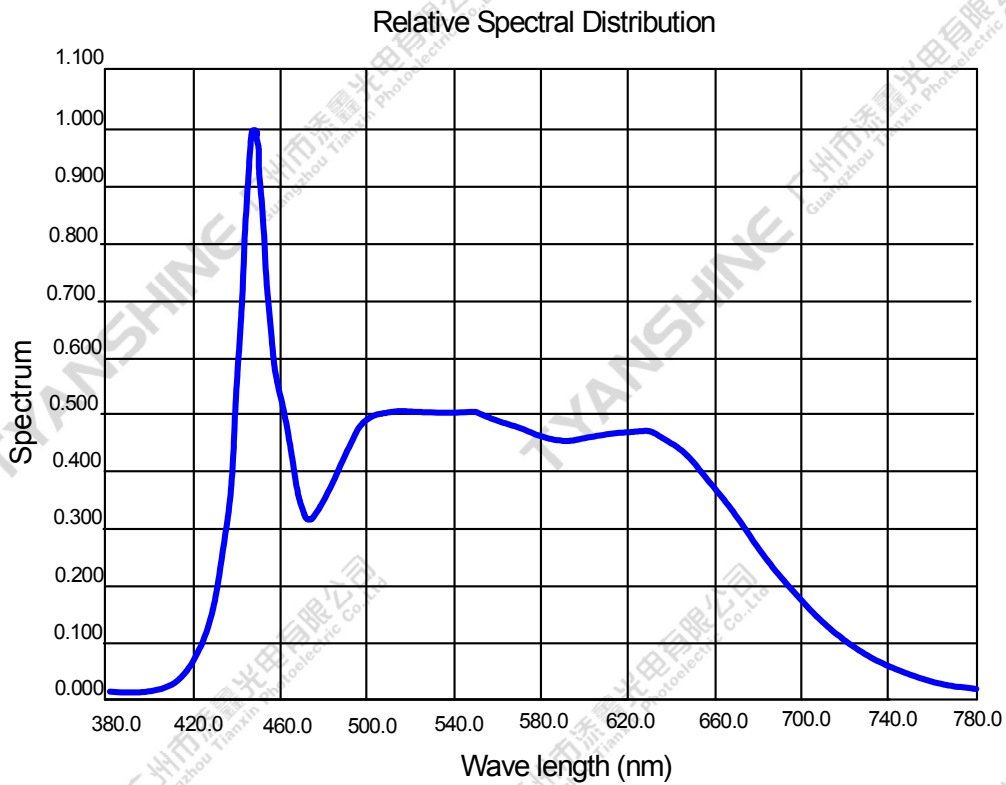
## Typical Electrical/Optical Characteristics Curves

(25°C Ambient Temperature Unless Otherwise Noted)









**Notes:**

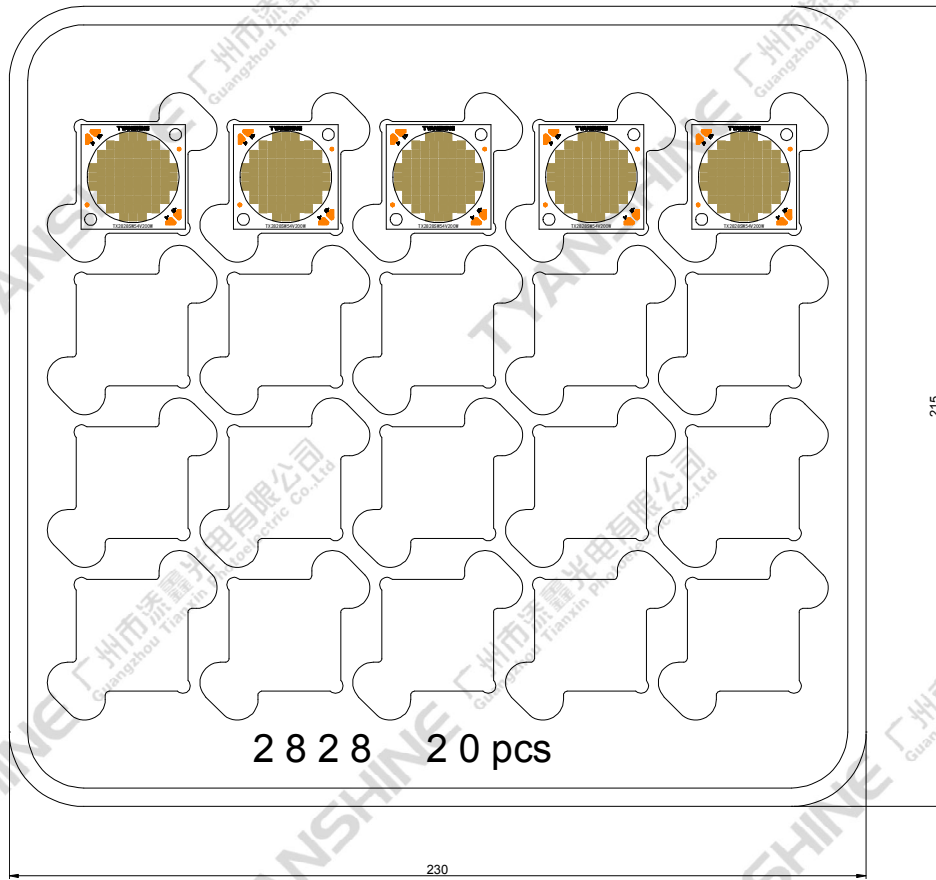
1.  $2\theta_{1/2}$  is the off axis angle from lamp centerline where the luminous intensity is 1/2 of the peak value.
2. View angle tolerance is  $\pm 5^\circ$ .

Part No.	TX-2828W350C25F18-10H95	Spec No.	WKF-DD0010	Page	8 of 9
----------	-------------------------	----------	------------	------	--------



**Dimensions For Cannulation And Packaging**

**Quantity:20 PCS**



**Notes:**

1. All dimensions are in millimeters.
2. Tolerances are  $\pm 2.0$  mm unless otherwise noted.
3. The products are packaged together with silica gel, Transport, not to the weight of welding LED light-emitting area, As a result of the weight of LED light-emitting zone in the quality of, Irresponsible of the Company.

Part No.	TX-2828W350C25F18-10H95	Spec No.	WKF-DD0010	Page	9 of 9
----------	-------------------------	----------	------------	------	--------